

(AVR)

DIN - 35 ,

LSU-122DG  
DEIF,

(LSU-112DG),

(LSU-113DG)  
(LSU-114DG).

LSU-122DG

"UNLOAD" (

LSU-122DG.

LSU-122DG

DEIF EPN-110DN

(AVR).

LSU-122DG

(AVR)

T<sub>N</sub>

X<sub>P</sub>

: ± 0,5% P<sub>n</sub>

: ± 1% U<sub>n</sub>.

DEIF

US-line

FAS-115DG

EPN-110DN,  
LSU-122DG.

(I × sin φ). LSU-122DG

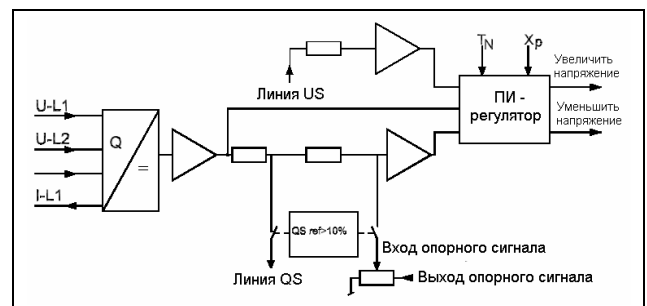
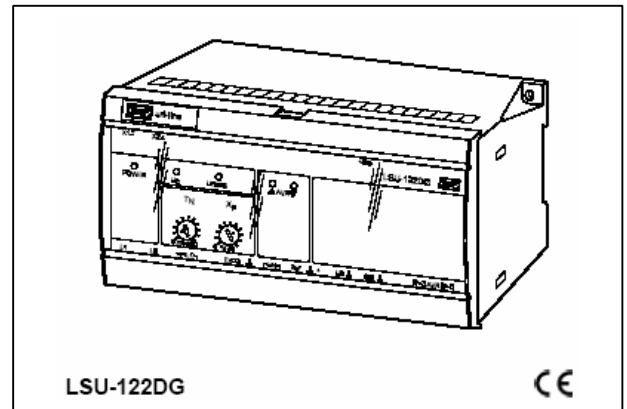
1var

1var3

1

, 3-

, 3-



(In): 0,3 - 0,4 - 0,5 - 0,6 - 0,8 - 1,0 - 1,3 - 1,5  
 - 2,0 - 2,5 - 3,0 - 4,0 - 5,0 (AC)  
 - 75 ... 100% In ( , 0,4; 0,45  
 . .) : 0,3  
 4 x In  
 20 x In 10 . ( . 75 )  
 80 x In 1 . ( . 300 )

0,5

(Un) . AC

60 ... 120% Un

- 1,2 x Un

2 x Un 10 .

2 /

40 ... 45 ... 65 ... 70

("UNLOAD")

- : 5 ; : 5

0 ... 5 (0 ... 100%)

 $\geq 2$ 

4 ... 20 (DC)

(US)

- 0 ... 5 ... 10 ~ 80 ... 100 ... 120% Un

2

- 250 - 8 - 2000 (AC)

24 - 8 - 200 (DC)

200 x 10<sup>3</sup>

250 (AC)

150 (DC)

QS

1

(- 5 ... 0 ... 5 )

5 = 100%

0 = 0%

: 5,0  $\pm$  2%: 5 (R  $\geq$  1 )

:

- 25 ... 70°C ( )

:  $\pm$  0,2% 10°C

; / (3250 , 50 - 1 .)

(Un)

57,7 - 63,5 - 100 - 110 - 127 - 200 - 220 -

230 - 240 - 380 - 400 - 415 - 440 - 450 -

660 - 690 (AC)  $\pm$  20% ( $\leq$  3,5 )

24 - 48 - 110 - 220 (DC) - 25% / + 30%

( $\leq$  2,0 )

HSE, DIN 40040

(EMC) EN 50081-1/2 EN 50082-1/2  
 SS4361503 (PL4) 255-3  
 : 2,5 2 4

UL94 (V1)

: IP40; IP20,  
529 EN 60529

"Uni-line"

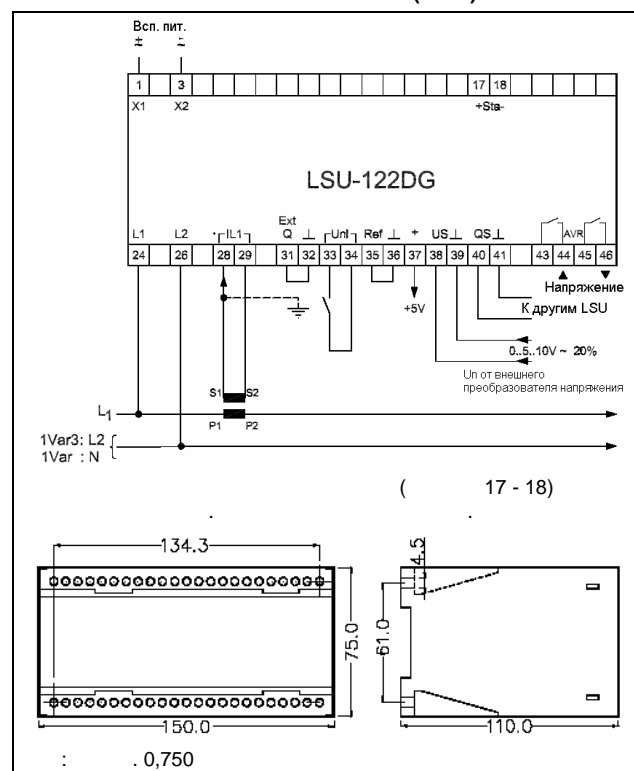
DEIF A/S

[www.deif.com](http://www.deif.com)

T <sub>N</sub>	25 ... 500
X <sub>P</sub>	0 ... $\pm$ 50% Q <sub>n</sub> 0 ... $\pm$ 10% U <sub>n</sub>

U <sub>G</sub>	( )	
Unload	( )	
AVR	( )	
AVR	( )	

"POWER",



( 17 - 18)

(P <sub>n</sub> *) - cos φ -
LSU-122DG - 1var3 - 100 - 0,8 - 100 - 24 (DC)
(P <sub>n</sub> ) = _____
*)



DEIF A/S, Frisenborgvej 33  
 DK-7800 Skive, Denmark

Tel.: +45 9614 9614, Fax: +45 9614 9615

E-mail: [deif@deif.com](mailto:deif@deif.com), URL: [www.deif.com](http://www.deif.com)

